



# Murray Bridge A&H Society Inc

*93<sup>rd</sup> Annual Show*

24<sup>th</sup> & 25<sup>th</sup> September 2011

**Section SK**  
**Machine Knitting**

*Convenor: Margaret Murray*

***Entries Close 16<sup>th</sup> September 2011***

## SECTION SK – MACHINE KNITTING

**Convenor:** Mrs Margaret Murray

**Steward:** Joy Turner



### **ENTRIES CLOSE 5pm, FRIDAY 16<sup>th</sup> SEPTEMBER 2011**

Entry Fee 60c, First \$2.50; Second \$1.00

Aggregate Points: First – 5 points, Second – 3 points

In the event of a draw, the Judge will decide a winner.

Only individual pieces will be eligible for an aggregate prize.

### **CONDITIONS:**

- 1 No article in Classes 1 – 15 to be laundered.
- 2 Items that have previously won First Prize at a Murray Bridge Show are ineligible.
- 3 Entries to be staged by 10am on Friday, 23<sup>rd</sup> September 2011
- 4 Judging to commence at 11:30am on Friday, 23<sup>rd</sup> September 2011
- 5 Only 1 (one) piece per entry unless stated otherwise.
- 6 No entries to be removed before 4:00pm on Sunday, 25<sup>th</sup> September 2011
- 7 Prize money to be paid out by 4:00pm on Sunday, 25<sup>th</sup> September 2011
- 8 Entries not to have been worn.

### **JUDGE'S ENCOURAGEMENT AWARD CLASSES 1 - 15**

**First & Second Prize Ribbons Donated by**

**Pauline R Murray Accountants**

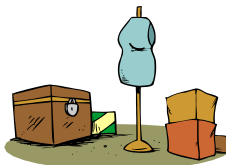
A Trophy will be awarded to the Exhibitor who exhibits at 3 affiliated shows and who gains the highest aggregate number of points

Voucher donated by CAROL BORRET, LANGHORNE CREEK

Aggregate Points: First – 5, Second – 3

### **MACHINE KNITTING**

- 1 Any article or garment in any stitch of / or featuring fancy yarn  
**Trophy donated in Memory of Eileen Rawlins by Margaret Murray**
- 2 Baby's 3 piece
- 3 Child's Garment or Suit
- 4 Ladies Skirt with Top or Jacket, any stitch
- 5 Garment of / or featuring Fair Isle
- 6 Garment of / or featuring Tuck or Slip Stitch
- 7 Garment of / or featuring Lace Knit
- 8 Garment Intarsia with 3 colours or more
- 9 Garment Double Bed Knitting Including Jacquard
- 10 Accessories Including Hat – Socks – Scarf etc.
- 11 Adult's Garment of Stocking Stitch, may include cable or stripes
- 12 Garment of / or featuring Machine Weaving
- 13 Toys and Novelties
- 14 Unclassified, Not Covered Elsewhere
- 15 Garment of / or featuring Garter Carriage



**AGGREGATE TROPHY CLASSES 1 – 15: Donated by Bridge Agencies Bazaar**

### **MOST OUTSTANDING SASH CLASSES 1 - 15**

Donor **Aileen Wilson**



