



# Murray Bridge A&H Society Inc

*93<sup>rd</sup> Annual Show*

24<sup>th</sup> & 25<sup>th</sup> September 2011

## **Section K Wool**

**Convenor: Keith Paech  
Tel: 8538 5092**

**Entries Close 16<sup>th</sup> September 2011**



# The Young Farmers Challenge

At the  
Murray Bridge Agricultural and Horticultural Society Inc Show

Sunday 25<sup>th</sup> September 2011

## Aim

To complete all challenges in the safest manner and fastest time through a team relay format

## All you need is a team of 5 people

Males and Females welcome

Must be over 18 years of age

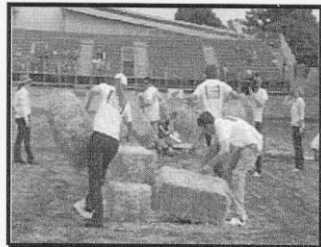
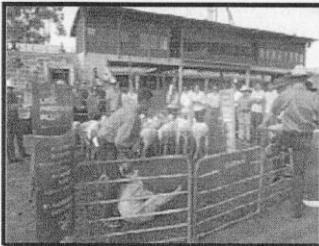
## Involves 10 rural based challenges such as:

Setting up a portable fence

Stacking small squares

Sack truck obstacle course

Please contact the Murray Bridge Show Society on (08) 8531 0248 for more information



# SECTION K – WOOL

**Convenor:** Mr Keith Paech (Tel: 8538 5092)

**SATURDAY 24<sup>th</sup> SEPTEMBER 2011**

**Entry Fee: \$1.10**

First Prize \$5, Second Prize \$2

No Second prize money unless 3 or more entries in Class  
(Aggregate points are unaffected)

**ENTRIES CLOSE 5pm FRIDAY 16<sup>th</sup> SEPTEMBER, 2011**

Commercial value (except for champion fleece)

*All Wool must be in the hands of Stewards by 1pm on  
Friday, 23<sup>th</sup> September 2011*

All Exhibits **MUST** be of the current years' shearing  
No fleece to be entered in more than one class, all fleece to be skirted to the standard  
recognised by Wool Brokers in accordance with objective clip preparation.

Trophies, Prize money and Exhibits  
to be collected 4pm Sunday

**Champion Fleece to be judged at Royal Adelaide Show, 2012**

Aggregate based on Commercial value in all Sections

**Aggregate Trophy donated by: ELDERS LIMITED**  
**To be won twice in successive years by same exhibitor**

**Best Commercial Fleece Trophy donated by**  
**LANDMARK**

## STUD OR SHEDDED SHEEP

1. Strong wool Ram Fleece
2. Strong wool Ewe Fleece
3. Medium wool Ram Fleece
4. Medium wool Ewe Fleece
5. Fine wool Ram Fleece
6. Fine wool Ewe Fleece
7. Ewe Fleece 1 ½ years old and under
8. Wether Fleece 1 ½ years old and under
9. 1 kg (min) Merino Lambs wool, 50mm and over
10. 1 kg (min) Merino Lambs wool under 50mm

## COMMERCIAL SECTION

11. Strong wool Ewe Fleece
12. Strong wool Wether Fleece
13. Medium wool Ewe Fleece
14. Medium wool Wether Fleece
15. Fine wool Ewe Fleece
16. Fine wool Wether Fleece
17. Ewe Fleece 1 ½ year old and under
18. Wether Fleece 1 ½ year old and under
19. 1kg (min) Merino Lambs wool 50mm and over
20. 1kg (min) Merino Lambs wool under 50mm

